

OREGON PUBLIC LAND CORNER REPORT / RESTORATION REPORT
Tillamook County Surveyor's Office

BOOK 8 215

SECTION: 28	TOWNSHIP: 1 South	RANGE: 10 West
COUNTY: Tillamook		DATE:
CORNER DESIGNATION:		(Please check one)
The Center-North 1/16 th corner of Section 28, Township 1 South, Range 10 West, Willamette Meridian; Tillamook County, Oregon.		<input checked="" type="checkbox"/> Condition Report Only
		<input type="checkbox"/> Restoration
		<input type="checkbox"/> Rewitness
		<input type="checkbox"/> Unrecorded
		<input type="checkbox"/> Reset at surface
		<input type="checkbox"/> Referenced Out

Previous Rewitnesses, Restorations and Surveys, etc...
Map B-3635 (2014)

History, condition, and sources

In 2014 (Map B-3635) Terry Jones PLS 2507 Set a 1" galvanized iron pipe with a 2 1/2" brass cap stamped "CN 1/16 S28 LS 2507 2014" as shown hereon and established accessories. In 2025 (Field Book MR 17 pg. 33-34 1/2025) the Tillamook County Surveyors Office Found a 2 1/2" brass cap stamp as shown hereon to be in good condition. The accessories are listed here below.

Found: (Map B-3635) steel post North 3.0' **now** with metal location tag

Found: (Map B-3635) white fiberglass post West 3.0'

Found: (Map B-3635) 10" dia. hemlock scribed "CN 1/16 S28 BT" with brass washer and nail between the B and the T stamped "LS 2507" S41°13'E 10.33' **now** 12" dia. with healed scar and metal location tag.

Found: (Map B-3635) 20" dia. spruce scribed "CN 1/16 S28 BT" with brass washer and nail between the B and the T stamped "Terry Jones LS 2507" S44°7W 16.54' **now** 22" dia. with healed scar and metal location tag.

New accessories set:

The monument was tied conventionally using GPS established control in Oregon North Zone NAD 83/91 grid coordinates in US Survey feet. Coordinates provided hereon are given in WGS 84 Latitude and Longitude.

Latitude: 45°27'36.47545"

Longitude: -123°55'01.41427"

Pictures of Found Monuments:



Location: ± 375' South of logging road #725

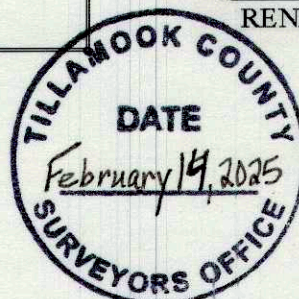
Tillamook County Surveyor office: 1510 3rd Street Suite C, Tillamook, OR. 97141

Party Chief: Travis Porter, Tillamook County Surveyors Office

Witnesses: Michael Rice P.L.S. 86926, Tillamook County Surveyor
Kael Poklikuha, Tillamook County Survey Technician

Notes: Digital images taken of monument and accessories.

SURVEYOR'S SEAL



BOOK 8 215